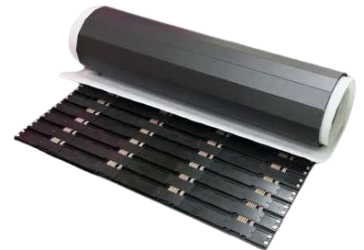




# Sidewinder

pitch	1.2	1.5	1.9	2.6	3.9
pixel tech	SMD/GOB	SMD/GOB	SMD/GOB	SMD/GOB	SMD/GOB



ideal for

Mobile or fixed hanging,  
rolling gate, floor

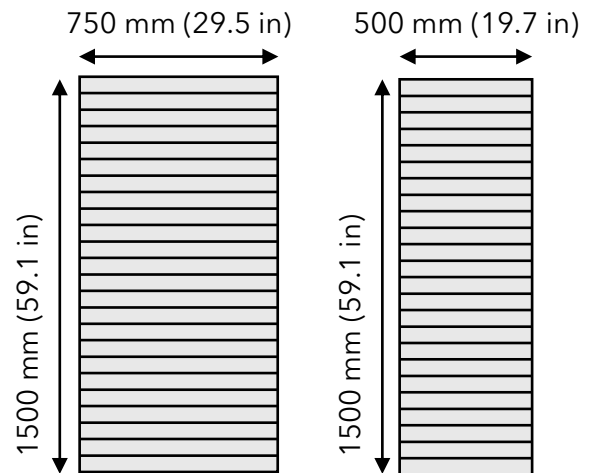
summary

**Sidewinder** is the innovative application to bring LED where it has never gone before.

Featuring rollable panels which are only 13mm thick in total, **Sidewinder** panels are comprised of slats. Each slat is only 62.5mm tall, and slats are hinged at the face. Panels are combined to produce displays of every size and need.

**Sidewinder** panels come standard with a GOB protective epoxy coating, making Sidewinder the high-durability display you can trust.

panel dimensions



weight

15 kg/square meter      3 lbs/square foot

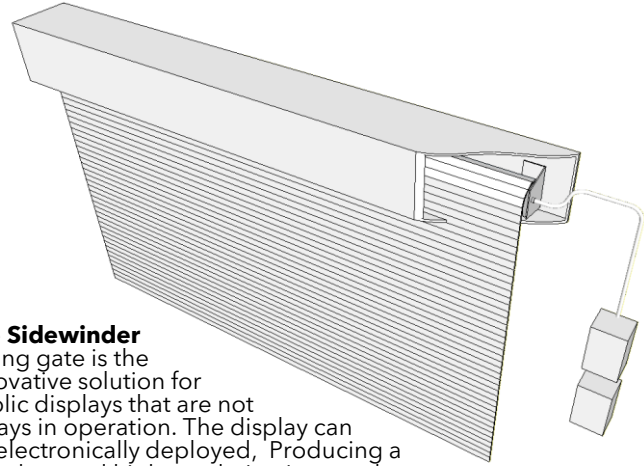
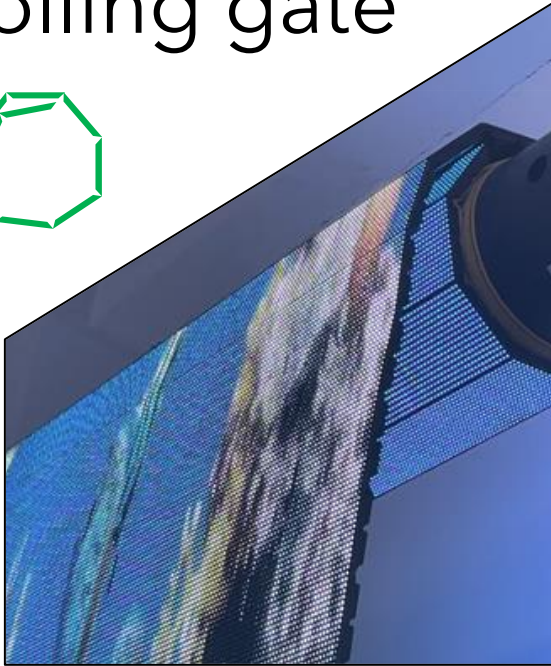
max brightness

600 nits

IP rating

IP63 (IP21 rear)

# rolling gate

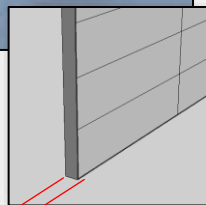
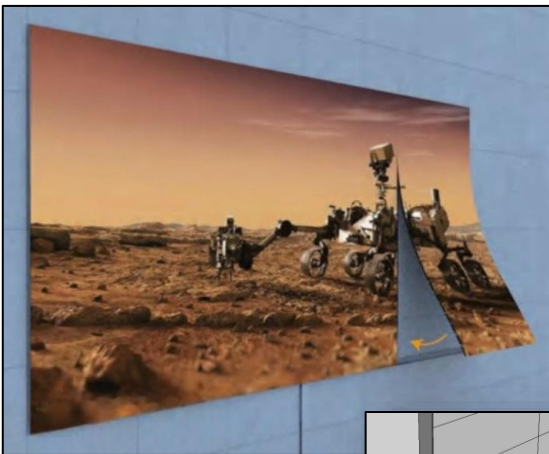


The **Sidewinder** rolling gate is the innovative solution for public displays that are not always in operation. The display can be electronically deployed, producing a seamless and high-resolution image, then stored safely when inactive. The rolling gate can be configured up to a maximum width and/or height of 10 meters. The top of the image can be set at any height using blank frames with a cover.

Featuring an impressive durability with a GOB epoxy protective coating, **Sidewinder** rolling gates can create a display at the entrance of a closed store or to replace the function which used to be filled with projectors and motorized screens.

Rich with all the value of direct-view LED, **Sidewinder** rolling gates can be used for several applications where you don't want to see the display when it is inactive.

# attach to a wall



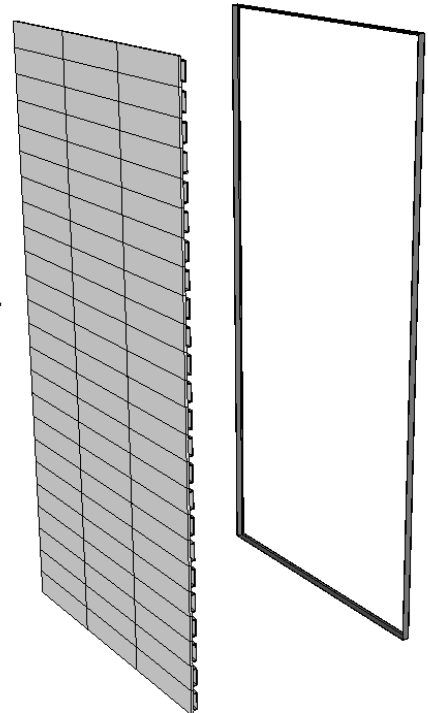
13mm

When you want to put a display on the wall with the slimmest profile possible, **Sidewinder** is the way to go.

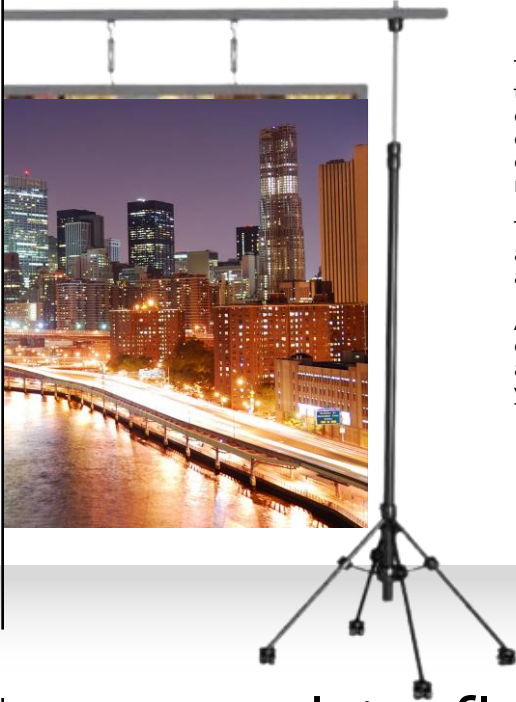
With no need for an expensive and thick wall-mount system, **Sidewinder** is held into a sleek and thin magnetic frame.

**Sidewinder** rolls lay flat on the wall. With a total depth of 13mm, **Sidewinder** is entirely ADA compliant without needing to be recessed into the wall.

A highly-convenient and easy to install solution, **Sidewinder** can quickly transform any wall into a beautiful digital landscape.



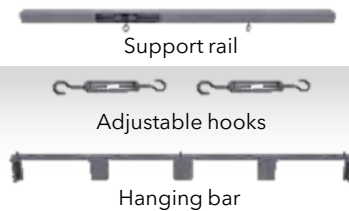
# collapsing display



The **Sidewinder** portable display combines the storage and transportation convenience of Sidewinder rolls with the needs for portable displays. Unlike other mobile direct-view LED displays, Sidewinder quickly disassembles into rolls which are then easily packed into a special case. The collapsing display can be configured to a desired size up to a maximum height and/or width of 10 meters.

The system includes hanging bars the hanging rail and can be paired with any standard speaker stands. Including a Novastar TU20, the system has an onscreen interface which is controller with an included remote control.

A dvLED display you can put in your truck, the **Sidewinder** portable display is handled and transported as light-weight rolls. Setup and strike are quick and painless, making the Sidewinder Portable Display a solution you can easily take with you on the go!



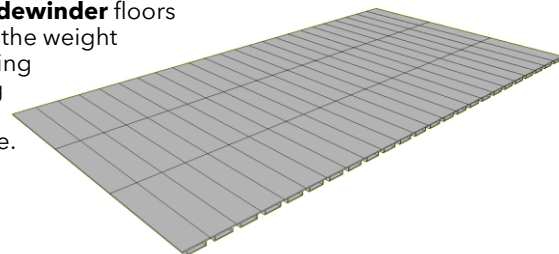
# super-thin floor



Create a stunning visual effect for audiences with an LED floor. With a total depth of only 13mm, the **Sidewinder** floor is the thinnest direct-view LED floor solution on the market. Display high-definition video using a product that lays on the floor like a rug. With a tightest pitch of 0.78mm, any viewing distance can be considered.

**Sidewinder** floors can be easily placed and moved, requiring very little effort for installation and causing almost no disruption to any active space.

With modules featuring a steel internal structure, **Sidewinder** floors can support the weight of a car making it an exciting prospect for any space.





# panel configurations

	500x1500mm	750x1500mm
width	500mm (19.7in)	750mm (29.5in)
height	1500mm (59in)	1500mm (59in)
depth	10mm (0.4in)	10mm (0.4in)
weight	12kg (26.4lbs)	18kg (39.7lbs)

# general specifications

brightness	600 Nits
LED half-life*	100,000 Hours
contrast	5,000:1 (8,000:1 for 1.9mm)
refresh rate	3,840 Hz
frame rate	50, 60 Hz
color temperature	8,500K default (2,000 - 10,000 K range)
processing depth	Up to 16 Bit
scan rate	1/32, 1/21, 1/16
temperatures	-20°C - +50°C operating
operating humidity	10% - 60% RH, non-condensing
maximum watts	510 W / SqM
operating voltage	100-240V AC, 50/60 Hz
maximum heat	1,739 BTU/hr / SqM
ip rating	IP63 front, IP21 rear
service access	Front or rear
warranty	3-year default (up to 5-year available)
certifications	ETL, FCC, LVC, EMC



## supported controllers

